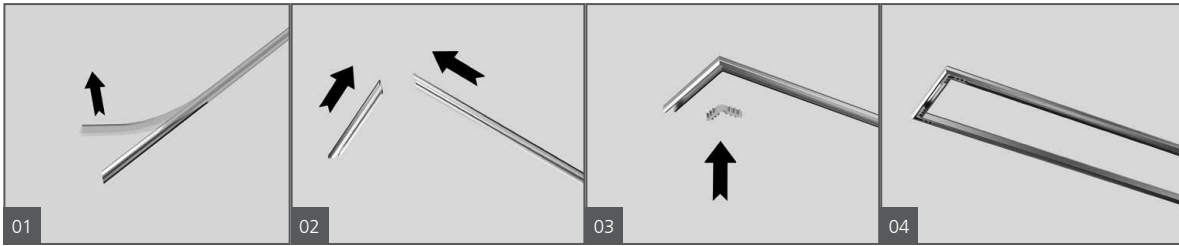
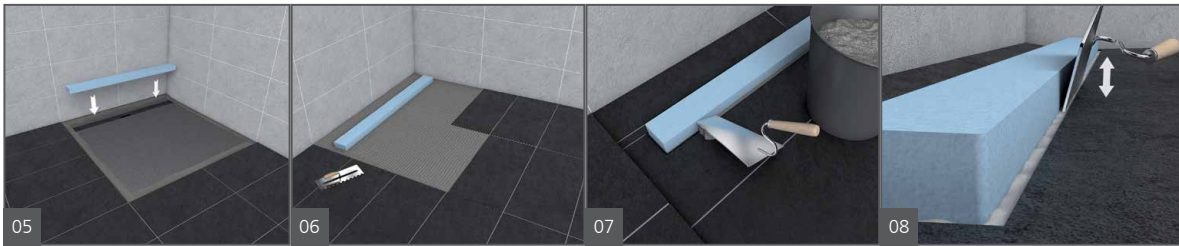


wedi Fundo Riolito Channel Frame



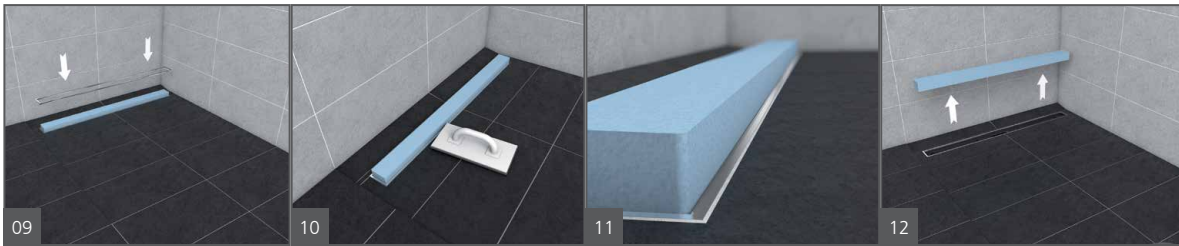
01 Remove the protective film.

03 Connect the corners.



06 Use the foam block (provided) as a spacer for thinset mortar.

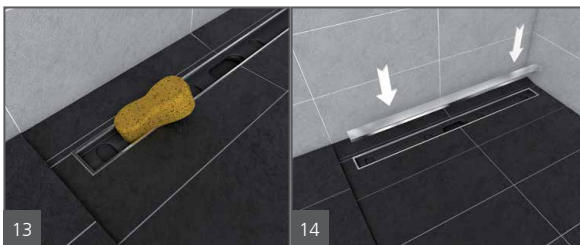
08 Apply thinset mortar to support the profile at desired height.



09 Install profile which is now resting on the thinset mortar.

10 Fill in grout.

12 Remove the foam block spacer.



13 Clean off any excess grout.

14 Insert the wedi drain cover.

Benefits of the wedi Fundo Riolito Channel frame include:

- Protects your tile and grout edges
- Adds a design finish to the tile edge
- Will not stop drainage
- Made of stainless steel

